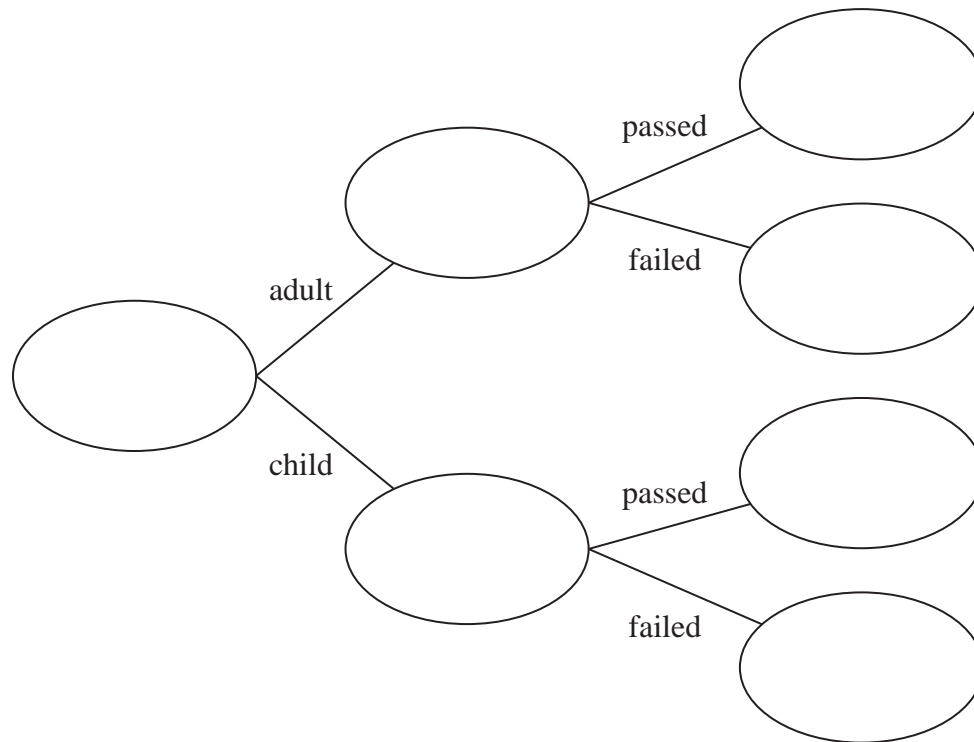


1 72 people did a test.

20 of the 32 adults who did the test passed.

6 of the children who did the test failed.

(a) Use this information to complete the frequency tree.



(3)

One of these people is picked at random.

(b) Find the probability that this person is an adult who failed the test.

.....  
(2)

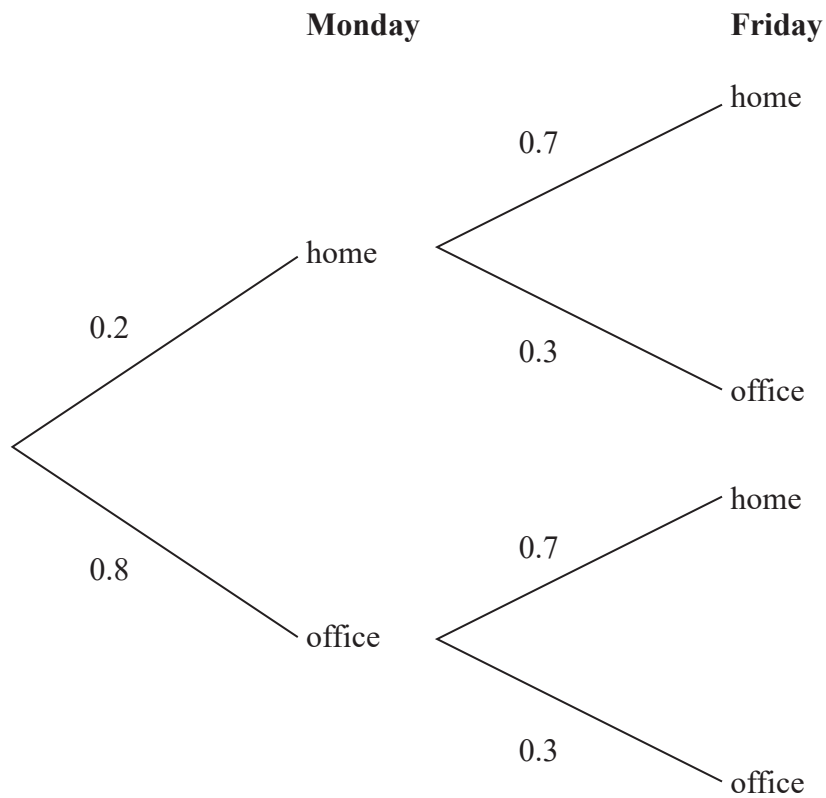
**(Total for Question 1 is 5 marks)**

---





- 4 The probability tree diagram shows the probabilities that Shayla will work at home or will work at the office on two days next week.



Work out the probability that Shayla will work at home on Monday and work at the office on Friday.

.....  
**(Total for Question 4 is 2 marks)**

---

5 240 people work at a factory.

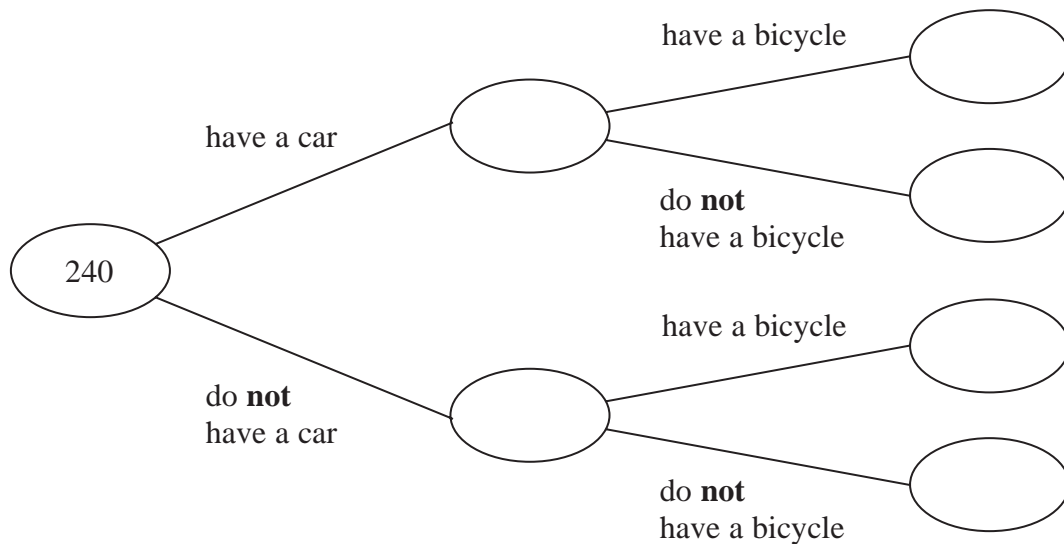
Of these people

150 have a car

110 have a bicycle

65 of the people who have a bicycle do **not** have a car.

(a) Use this information to complete the frequency tree.



(3)

(b) What percentage of the 150 people who have a car also have a bicycle?

.....%

(2)

**(Total for Question 5 is 5 marks)**